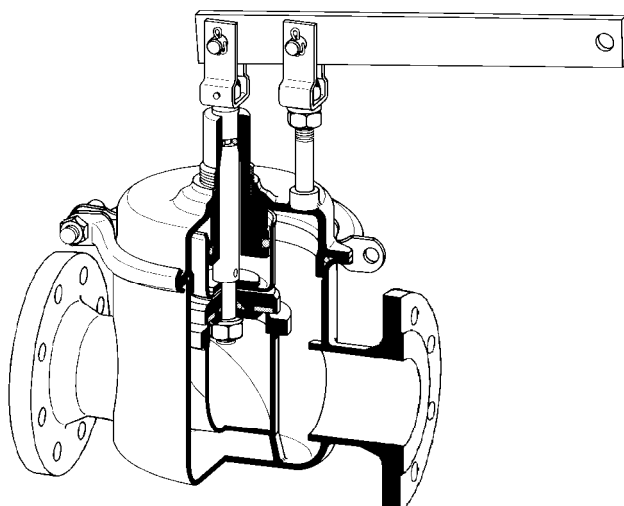


FLOAT VALVES

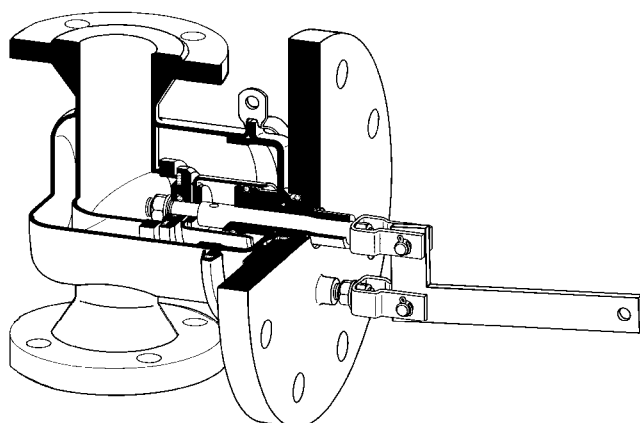
Single seated and balanced, installation in pipelines and at tanks, for liquids

Type 66e
67e

Type 66e



Type 67e



TECHNICAL DATA

MEDIUM	liquids
NOMINAL PRESSURE	PN 16
CONNECTION	DN 15 - 100
OPERATING PRESSURE	0 - 16 bar
TEMPERATURE	up to 80 / 130 °C
KVS-VALUE	4 - 100 m ³ /h
CONNECTION FLANGES	DIN 2633

DESCRIPTION

Float valves type 66e and 67e are automatic controllers of liquid levels in closed or open vessels. All parts consist of stainless steel with smooth surfaces.

The float reacts to the liquid level and controls the valve directly via a lever. A level in- or decrease effects immediately a change of the throughput.

Type 66e is a straight-way pipeline valve for horizontal or vertical flow, type 67e is a pipeline valve with tank add-on flanges for vertical flow. The soft sealing ensures tightness.

The valves are equipped with a float rod on which an internal tube float is mounted (normally a cylindrical float type 8). The liquid level can be adjusted by varying the position of the float on the rod.

Special designs with other sealing materials for aggressive mediums and higher temperatures are available for an extra charge.

Important for float valves with float rods:

If the liquid level is below the float lever, i.e. if the float rod is directed downwards, a guide should be provided for the float rod at site.

When inquiring or ordering, please, state following additional letters:

- Z = inflow. Valves closes , when float rises.
- A = outflow. Valve closes, when float falls.
- w = horizontal flow.
- o = flow direction upwards.
- u = flow direction downwards.

Example: float valve type 66e Z/w (inflow valve, horizontal flow direction).

Mankenberg reserves the right, to alter or improve the designs or specifications of the products described herein without notice.

Special designs on request.

KVS-VALUES [m ³ /h]							
nominal diameter DN							
15	20	25	40	50	65	80	100
4	5	6	20	32	50	80	100

FLOAT VALVES



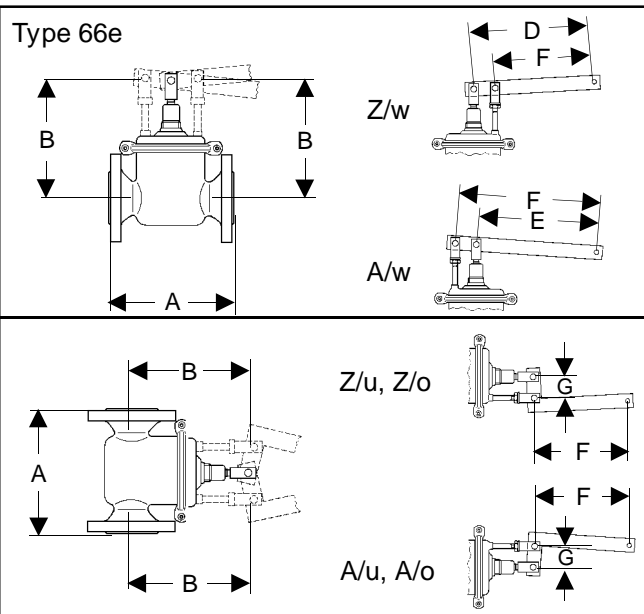
WIR REGELN DAS SCHÖN.

Single seated and balanced, installation in pipelines and at tanks, for liquids

Type 66e
67e

MATERIALS	
BODY	CrNiMo-steel
CONE, SEAT	CrNiMo-steel
PISTON, SPINDLE	Cr-steel
CONE SEALING	up to 80 °C NBR / up to 130 °C EPDM
LINKAGE	CrNiMo-steel
FLOAT ROD	CrNiMo-steel
FLOAT	CrNiMo-steel

Type 66e



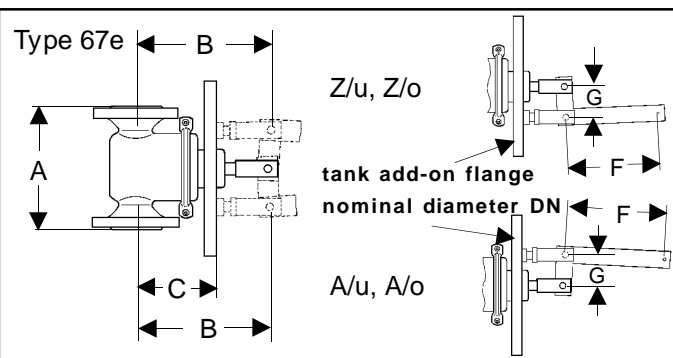
DIMENSIONS [mm]

size	nominal diameter DN							
	15	20	25	40	50	65	80	100
A		160		200	230	290	310	350
B		185		220			325	
D		360		480			640	
E		270		360			480	
F		315		420			560	
G		45		60			80	

WEIGHTS [kg]

nominal diameter DN							
15	20	25	40	50	65	80	100
5,8	6,2	6,5	14	14,5	28,5	30,5	31,5

Type 67e



DIMENSIONS [mm]

size	nominal diameter DN							
	15	20	25	40	50	65	80	100
A		160		200	230	290	310	350
B		185		220			325	
C		125		145			220	
F		210		280			420	
G		30		40			60	
DN		100		125			200	

WEIGHTS [kg]

nominal diameter DN							
15	20	25	40	50	65	80	100
11,5	12	15	22,5	23	44,5	46,5	47,5

CYLINDRICAL FLOAT Ø TYPE 8 [mm] (ø = height) *

nominal diameter DN	15	20	25	40	50	65	80	100
float ø mm	200	200	200	240	240	305	305	305

*Dimensions and weights see sheet "Floats" no. SR 0.1

Mankenberg reserves the right, to alter or improve the designs or specifications of the products described herein without notice.
Special designs on request.