

Sight Flow Indicators (straight line)

with *flanged connection* acc. to **ANSI 150 / 300 lbs**

Bauform 112-A

Application:

Sight Flow Indicators are used for optical control and the observation of filling and current in pipelines. Without rest fluid in the body in horizontal installation.

Operating conditions:

Working pressure: 16 bar at 150 lbs
40 bar at 300 lbs
Working temperature: 150°C or 280°C

Installation:

Optional

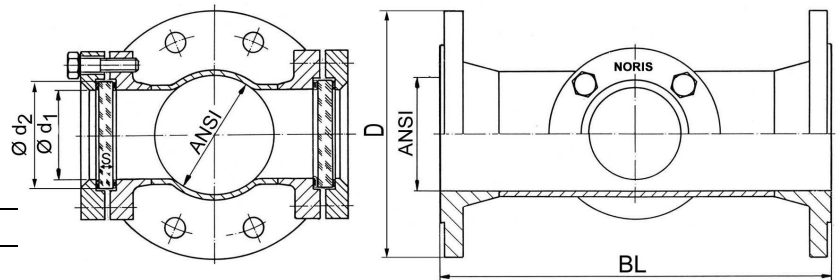
Options:

Flanges in DIN
Body in steel
Extra length
Light-fitting

Materials:

Body	WN 1.4571 (1.4404)
Covers	Stainless steel
Screws	A4-70
Glass	Borosilicate glass acc. to DIN 7080 Soda lime glass acc. to DIN 8902
Gasket	Graphite; (or other materials)

Without rest fluid
in the body



Ordering example:

Sight flow indicators Bauform 112-A
Body: WN 1.4571; Borosilicate glass
ANSI 4" 150 lbs



Dimensions:

ANSI	D		BL (DIN F1)	d ₁	Glass plate		
	150 lbs	300 lbs			d ₂	S	
						16 bar	40 bar
1"	108,0	123,8	160	23	45	10	10
1 1/4"	117,5	133,4	180	23	45	10	15
1 1/2"	127,0	155,6	200	39	63	10	15
2"	152,4	165,1	230	44	63	10	15
2 1/2"	177,8	190,5	290	44	63	15	25
3"	190,5	209,6	310	64	80	12	20
4"	228,6	254,0	350	80	100	15	25
5"	254,0	279,4	400	80	100	15	25
6"	279,4	317,5	480	100	125	20	30
8"	342,9	381,0	600	125	150	25	a.A.
10"	406,4	444,5	730	150	175	25	a.A.
12"	482,6	520,7	850	150	175	25	a.A.
14"	533,4	584,2	980	150	175	25	a.A.
16"	596,9	647,7	1100	150	175	25	a.A.

Modification reserved