

# Sight Glass Fittings Obround

to be **welded** directly to tank

### Application:

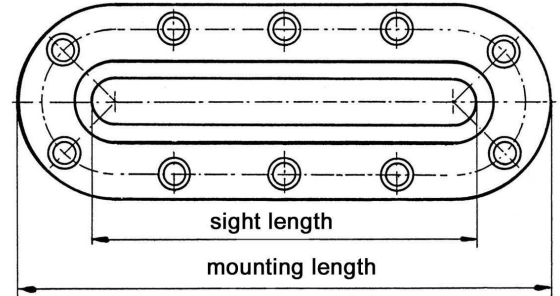
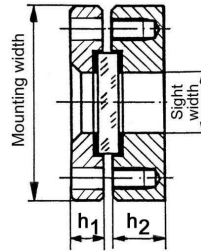
To show surface of a liquid, for insertion into attachment to tanks, vessels and silos.

### Operating conditions:

Temperature : 100°C or 280°C  
Pressure: 3 / 6 / 25 bar

### Materials:

Body	WN 1.4571	RSt 37-2 / H II
Cover	WN 1.4571	RSt 37-2 / H II
Screws	A4-70	8.8 vz
Glass	Borosilicate glass acc. to DIN 7081 Soda lime glass acc. to DIN 8903	
Gaskets	Asbestos free ( or other materials )	



### Mounting instruction:

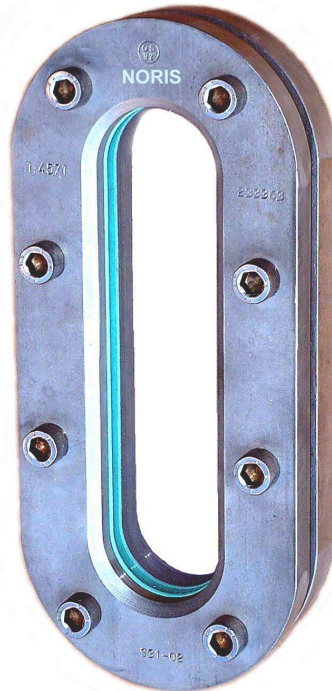
After welding please examine if sealing area is plane. Otherwise re-machining is necessary.

### Caution:

Before putting the fitting into operation, the strength of the cutout reinforcement in combination with the vessel wall should be checked in accordance with TÜV leaflet B9 ( AD Merkblatt B 9 )

### Example for an order:

Sight glass fittings, obround Bauform 225  
Body WN 1.4571  
Cover RSt 37-2  
Borosilicate glass – 3 bar  
410 x 120 mm



### Pressure 3 bar, Visual 50 mm

Mounting dim. Length x Width	Sight dim. Length x Width	Strength	
		h1	h2
270 x 120	200 x 50	15	25
340 x 120	270 x 50	15	25
410 x 120	340 x 50	15	25
480 x 120	410 x 50	15	25
550 x 120	480 x 50	15	25
620 x 120	550 x 50	15	25
690 x 120	620 x 50	15	25
760 x 120	690 x 50	15	25

### Pressure 6 bar, Visual 30 mm

Mounting dim. Length x Width	Sight dim. Length x Width	Strength	
		h1	h2
250 x 100	180 x 30	15	25
310 x 100	240 x 30	15	25
370 x 100	300 x 30	15	25
430 x 100	360 x 30	15	25
490 x 100	420 x 30	15	25
550 x 100	480 x 30	15	25
610 x 100	540 x 30	15	25
670 x 100	600 x 30	15	25

### Pressure 25 bar, Visual 20 mm

Mounting dim. Length x Width	Sight dim. Length x Width	Strength	
		h1	h2
176 x 70	126 x 20	20	25
226 x 70	176 x 20	20	25
256 x 70	206 x 20	20	25
316 x 70	266 x 20	20	25
376 x 70	326 x 20	20	25
436 x 70	386 x 20	20	25
496 x 70	446 x 20	20	25
536 x 70	486 x 20	20	25

Modification reserved