



flow & process solutions





Potravinářský průmysl
Farmaceutický průmysl
Biotechnologie
Petrochemie
Chemický průmysl
Energetika
Úprava vody
Papírenství a zpracování celulózy
Plynárenský průmysl
Keramický průmysl
Zpracovatelský průmysl



Firma s tradicí od r. 1990 se při svém vzniku zaměřila na dodávky základních komponent, přístrojové a měřicí techniky a dodávky technologií pro farmaceutický a potravinářský průmysl. Cílem bylo zajistit kompletní dodavatelsko - inženýrské služby, včetně servisu. V roce 1998, který byl pro firmu velmi významným mezníkem, proběhla transformace společnosti do nynější formy. V dalších letech činnosti společnosti dochází k rozšíření portfolia a je navazována spolupráce s partnery v oblasti armatur, komponent, ventilů, procesní měřicí techniky a čerpadel.

Oblastí působnosti je potravinářský, farmaceutický průmysl, biotechnologie, chemický průmysl, petrochemie, úprava vody, papírenství a celulóza, energetika, keramický průmysl a zpracovatelský průmysl.

Firma REGOM INSTRUMENTS je díky širokému dodavatelskému portfoliu a bohatým zkušenostem schopna zajistit dodávky armatur, komponent, čerpadel, přístrojů a zařízení.

Cílem společnosti REGOM INSTRUMENTS je poskytování kvalitních služeb a spolehlivých dodávek pro co nejširší okruh zákazníků.

"SX" Level Transmitter

Introduction

This line of sensors provide superior signal stability. The field tested performance of the "SX" transmitter means the elimination of expensive, repetitive re-calibrations along with protection against costly overflow/run-dry situations that can occur with less stable level transmitters. The 0.2% accuracy experienced at installation can now be expected a year later!

We've also incorporated a new field calibration feature that provides "one-touch" sensor zeroing as well as simple range calibration, without the need for special tools and fixtures, pressure sources, or removal of the transmitter from the tank. This translates to real cost savings during installation or when adjusting for new application requirements.

Of course the "SX" Transmitter is available in all standard fitting and range combinations you'll need to fit any sanitary tank application. All variations are CE compliant, meet Intrinsically Safe requirements, 3-A Sanitary Standards, and are backed by a 2-year warranty.

Complete specifications and ordering information are available on the reverse. For more information please visit our Web Site at www.anderson-negele.com, or contact your local Authorized Anderson-Negele Distributor.

Features

"Driftless" transmitters mean:

- Fewer tune-ups
- No more overflows
- More reliable inventories

Special Features Include:

- Quick Disconnect Receptacles with optional Field Wiring Connectors
- One-Touch Field Calibration



Specifications

PERFORMANCE

Level Measurement Ranges:
(Factory calibrated at no charge and easily field calibrated within the parameters listed below)

	Minimum	Maximum (URL*)	Proof Pressure
SX5 Series	0-30 " w.c.**	0-140 " w.c.	10 psig
SX6 Series	0-140.1 " w.c.	0-415 " w.c.	30 psig
SX7 Series	0-415.1 " w.c.	0-830 " w.c.	60 psig
SX8 Series	0-830.1 " w.c.	0-1385 " w.c.	100 psig

Ranges to accommodate vacuum available on request

Calibrated Accuracy: (includes repeatability, hysteresis, and linearity)
± 0.20% of URL at stable calibration temperature

Repeatability: ±0.075% of URL

Hysteresis: ±0.075% of URL

Linearity (BFSL):*** ±0.05% of URL

Calibration Stability: Within ±0.2% of URL for one (1) year minimum

Resolution: Infinite

Process Temperature Limits: -18°C to 130°C (0°F to 265°F)

Ambient Temperature Limits: -9°C to 49°C (15°F to 120°F)

Compensated Temp. Range: -18°C to 121°C (0°F to 250°F) (process)

Temperature Stability: ±0.2% of Upper Range Limit (URL) per 5.5°C (10°F)

Over-Range Capacity: 2 times the URL (see table above)

Response Time: 526 mSec

Power Signal

Loop Power (excitation): 12-40 vdc

Output: 4-20mA dc, 2-wire. Internal test points supplied

Loop Resistance: 1550 ohms (max.) at 40 vdc, 750 ohms (max) at 24 vdc

Cable Recommended: 2 conductor, stranded, 18-24 AWG, shielded with ground
0.17 - 0.26" Cable Sheath OD for use with field wiring connector.
Anderson molded cord set recommended for best EMI and water protection.

Receptacle: 5-pin M12 Quick Disconnect Receptacle

MATERIALS/CONSTRUCTION

Housing Material: 304 and 316 stainless steel finished to 32Ra max.

Wetted Parts: 316L stainless steel electropolished to 8Ra max.

Gasket: Anderson Flush Gasket USP VI

Ratings: NEMA 4X, IP66, IP67

AGENCY APPROVALS

Hazardous Locations: Intrinsically safe for use in Class 1, Div. 1, Groups A-D

Electromagnetic Compatibility (EMC): CE Compliant 3-A compliant; Third party verified
Designed and manufactured to sound engineering practices in accordance with Article 3.3 of the PED 97/23/EC.

CSA B51-03
CRN# CSA0F9754.5C

Warranty: All units are covered by a two (2) year warranty against defects in material and workmanship when installed and maintained according to the instruction manual provided.

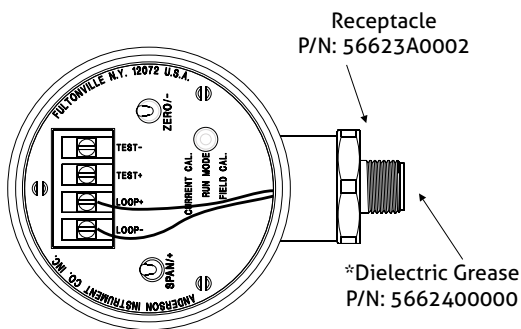
* URL = Upper Range Limit

** w.c. = water column

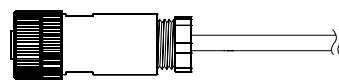
*** BFSL = Best Fit Straight Line

Electrical Connections and Wiring Options

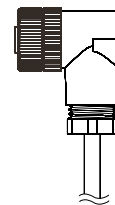
0.17-0.26" Cable Sheath Diameter



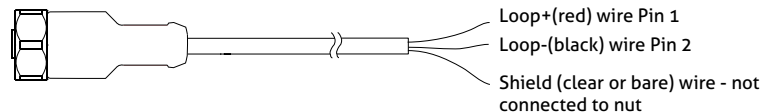
Field Wireable Connector (assembled)
P/N: 42119B0000 (without cable)



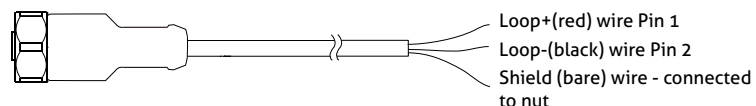
90° Field Wireable Connector (assembled)
P/N: 42119A0000 (without cable)



Molded Cordset



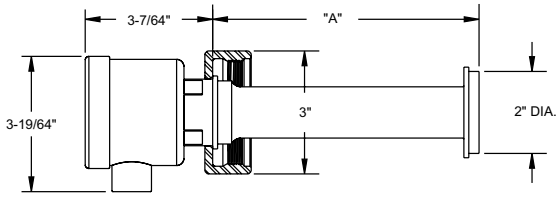
Shield Cordset



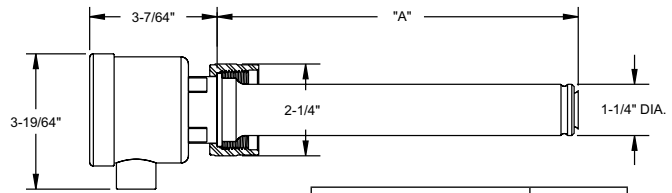
Order Information

<p>SPAN RANGE</p> <table border="0"> <tr><td>5</td><td>0-30" min to 0-140" max</td></tr> <tr><td>6</td><td>0-140.1" to 0-415" max</td></tr> <tr><td>7</td><td>0-415.1" to 0-830" max</td></tr> <tr><td>8</td><td>0-830.1" to 0-1385" max</td></tr> </table> <p>FITTING</p> <table border="0"> <tr><td>089</td><td>Anderson Flush Mount Long - with USP VI gasket (71060-A3, A5, A7, A9)</td></tr> <tr><td>088</td><td>Anderson Flush Mount Short - with USP VI gasket (71060-A4, A6, A8)</td></tr> <tr><td>091</td><td>Cherry Burrell Flush Mount Long (insulated tank)</td></tr> <tr><td>090</td><td>Cherry Burrell Flush Mount Short (uninsulated tank)</td></tr> <tr><td>092</td><td>King Gage Flush Mount Long (1777-3)</td></tr> <tr><td>093</td><td>King Gage Flush Mount Medium (1777-1, -6 Standard)</td></tr> <tr><td>094</td><td>King Gage Flush Mount Short (1777-2 non-insulated)</td></tr> <tr><td>097</td><td>Tank Mate Flush Mount Long¹ (208WVE)</td></tr> <tr><td>096</td><td>Tank Mate Flush Mount Medium¹ (205WVE)</td></tr> <tr><td>095</td><td>Tank Mate Flush Mount Short¹ (200WVE)</td></tr> <tr><td>004</td><td>1-1/2" Tri-Clamp®</td></tr> <tr><td>005</td><td>2" Tri-Clamp®</td></tr> <tr><td>007</td><td>3" Tri-Clamp®</td></tr> <tr><td>059</td><td>1-1/2" NPT³</td></tr> <tr><td>141</td><td>Rosemount / Foxboro Sanitary Spud - Short</td></tr> <tr><td>142</td><td>Rosemount / Foxboro Sanitary Spud - Long</td></tr> <tr><td>154</td><td>Endress & Hauser Universal Adaptor - short</td></tr> <tr><td>155</td><td>Endress & Hauser Universal Adaptor - long</td></tr> </table> <p>DIAPHRAGM</p> <table border="0"> <tr><td>1</td><td>SS-316L Electropolished</td></tr> <tr><td>2</td><td>Hastelloy "C" (N/A with King-Gage, Tank Mate, or Endress & Hauser Fittings)</td></tr> </table>	5	0-30" min to 0-140" max	6	0-140.1" to 0-415" max	7	0-415.1" to 0-830" max	8	0-830.1" to 0-1385" max	089	Anderson Flush Mount Long - with USP VI gasket (71060-A3, A5, A7, A9)	088	Anderson Flush Mount Short - with USP VI gasket (71060-A4, A6, A8)	091	Cherry Burrell Flush Mount Long (insulated tank)	090	Cherry Burrell Flush Mount Short (uninsulated tank)	092	King Gage Flush Mount Long (1777-3)	093	King Gage Flush Mount Medium (1777-1, -6 Standard)	094	King Gage Flush Mount Short (1777-2 non-insulated)	097	Tank Mate Flush Mount Long ¹ (208WVE)	096	Tank Mate Flush Mount Medium ¹ (205WVE)	095	Tank Mate Flush Mount Short ¹ (200WVE)	004	1-1/2" Tri-Clamp®	005	2" Tri-Clamp®	007	3" Tri-Clamp®	059	1-1/2" NPT ³	141	Rosemount / Foxboro Sanitary Spud - Short	142	Rosemount / Foxboro Sanitary Spud - Long	154	Endress & Hauser Universal Adaptor - short	155	Endress & Hauser Universal Adaptor - long	1	SS-316L Electropolished	2	Hastelloy "C" (N/A with King-Gage, Tank Mate, or Endress & Hauser Fittings)	<p>CALIBRATION</p> <p>##### Height in inches w.c.² (to nearest tenth)</p> <p>00000 Field Calibrated</p> <p>Examples:</p> <table border="0"> <tr><td>10850</td><td>1,085.0 inches</td></tr> <tr><td>00305</td><td>30.5 inches</td></tr> </table> <p>SENSOR WIRING</p> <table border="0"> <tr><td>00</td><td>Quick Disconnect Receptacle (QDR) w/No Cable</td></tr> <tr><td>R0</td><td>QDR & 90° FWC w/No Cable</td></tr> <tr><td>01</td><td>QDR & Field Wireable Connector (FWC) w/No Cable</td></tr> <tr><td>05</td><td>QDR w/25 ft Standard Molded Cordset</td></tr> <tr><td>10</td><td>QDR w/25 ft Standard Molded Cordset</td></tr> <tr><td>20</td><td>QDR w/25 ft Standard Molded Cordset</td></tr> <tr><td>99</td><td>1/2" NPTNo QDR, no FWC and no Cable (No sensor warranty for water damage)</td></tr> </table> <p>MOUNTING</p> <table border="0"> <tr><td>0</td><td>Horizontal</td></tr> <tr><td>1</td><td>Vertical</td></tr> <tr><td>2</td><td>Other (specify angle from vertical or from horizontal)</td></tr> </table> <p>ACCESSORIES</p> <p><u>Anderson Weld-In Shells for Flush Mount Level Transmitters</u></p> <table border="0"> <tr><td>71060A0003</td><td>Insulated Vessel - Standard Flange - 316L</td></tr> <tr><td>71060A0004</td><td>Uninsulated Vessel - Standard Flange - 316L</td></tr> <tr><td>71060A0005</td><td>Insulated Vessel - Pressure Vessel Flange - 316L</td></tr> <tr><td>71060A0006</td><td>Uninsulated Vessel - Pressure Vessel Flange - 316L</td></tr> <tr><td>71060A0009</td><td>Insulated Vessel - H/D Press. Vessel Flange - 316L</td></tr> </table> <p><u>Shell Adaptor</u></p> <table border="0"> <tr><td>Tank Mate, uninsulated</td><td>57200A0002</td></tr> <tr><td>Tank Mate, insulated</td><td>57200A0001</td></tr> </table> <p><u>Gaskets for Flush Mount Level Transmitters</u></p> <table border="0"> <tr><td>Anderson USP VI</td><td>44348A0003</td></tr> <tr><td>Cherry Burrell</td><td>44292A0001</td></tr> <tr><td>King Gage</td><td>36240S3212</td></tr> <tr><td>Tank Mate</td><td>36240S3123</td></tr> <tr><td>Continental</td><td>5658900000</td></tr> <tr><td>Rosemount/Foxboro</td><td>36240E3341</td></tr> </table> <p><u>Sensor Calibration Adaptors</u></p> <table border="0"> <tr><td>Anderson fitting</td><td>73198A0001</td></tr> <tr><td>Cherry Burrell fitting</td><td>73198A0002</td></tr> <tr><td>King Gage Fitting</td><td>73198A0003</td></tr> <tr><td>Tankmate</td><td>73198A0004</td></tr> </table> <p><u>Cord Sets</u></p> <table border="0"> <tr><td>Molded w/25' cable</td><td>42117K0025</td></tr> <tr><td>Molded w/50' cable</td><td>42117K0050</td></tr> <tr><td>Molded w/100' cable</td><td>42117K0100</td></tr> <tr><td>5-Conductor w/25' cable</td><td>42117H0025</td></tr> <tr><td>5-Conductor w/50' cable</td><td>42117H0050</td></tr> <tr><td>5-Conductor w/100' cable</td><td>42117H0100</td></tr> </table>	10850	1,085.0 inches	00305	30.5 inches	00	Quick Disconnect Receptacle (QDR) w/No Cable	R0	QDR & 90° FWC w/No Cable	01	QDR & Field Wireable Connector (FWC) w/No Cable	05	QDR w/25 ft Standard Molded Cordset	10	QDR w/25 ft Standard Molded Cordset	20	QDR w/25 ft Standard Molded Cordset	99	1/2" NPTNo QDR, no FWC and no Cable (No sensor warranty for water damage)	0	Horizontal	1	Vertical	2	Other (specify angle from vertical or from horizontal)	71060A0003	Insulated Vessel - Standard Flange - 316L	71060A0004	Uninsulated Vessel - Standard Flange - 316L	71060A0005	Insulated Vessel - Pressure Vessel Flange - 316L	71060A0006	Uninsulated Vessel - Pressure Vessel Flange - 316L	71060A0009	Insulated Vessel - H/D Press. Vessel Flange - 316L	Tank Mate, uninsulated	57200A0002	Tank Mate, insulated	57200A0001	Anderson USP VI	44348A0003	Cherry Burrell	44292A0001	King Gage	36240S3212	Tank Mate	36240S3123	Continental	5658900000	Rosemount/Foxboro	36240E3341	Anderson fitting	73198A0001	Cherry Burrell fitting	73198A0002	King Gage Fitting	73198A0003	Tankmate	73198A0004	Molded w/25' cable	42117K0025	Molded w/50' cable	42117K0050	Molded w/100' cable	42117K0100	5-Conductor w/25' cable	42117H0025	5-Conductor w/50' cable	42117H0050	5-Conductor w/100' cable	42117H0100
5	0-30" min to 0-140" max																																																																																																																						
6	0-140.1" to 0-415" max																																																																																																																						
7	0-415.1" to 0-830" max																																																																																																																						
8	0-830.1" to 0-1385" max																																																																																																																						
089	Anderson Flush Mount Long - with USP VI gasket (71060-A3, A5, A7, A9)																																																																																																																						
088	Anderson Flush Mount Short - with USP VI gasket (71060-A4, A6, A8)																																																																																																																						
091	Cherry Burrell Flush Mount Long (insulated tank)																																																																																																																						
090	Cherry Burrell Flush Mount Short (uninsulated tank)																																																																																																																						
092	King Gage Flush Mount Long (1777-3)																																																																																																																						
093	King Gage Flush Mount Medium (1777-1, -6 Standard)																																																																																																																						
094	King Gage Flush Mount Short (1777-2 non-insulated)																																																																																																																						
097	Tank Mate Flush Mount Long ¹ (208WVE)																																																																																																																						
096	Tank Mate Flush Mount Medium ¹ (205WVE)																																																																																																																						
095	Tank Mate Flush Mount Short ¹ (200WVE)																																																																																																																						
004	1-1/2" Tri-Clamp®																																																																																																																						
005	2" Tri-Clamp®																																																																																																																						
007	3" Tri-Clamp®																																																																																																																						
059	1-1/2" NPT ³																																																																																																																						
141	Rosemount / Foxboro Sanitary Spud - Short																																																																																																																						
142	Rosemount / Foxboro Sanitary Spud - Long																																																																																																																						
154	Endress & Hauser Universal Adaptor - short																																																																																																																						
155	Endress & Hauser Universal Adaptor - long																																																																																																																						
1	SS-316L Electropolished																																																																																																																						
2	Hastelloy "C" (N/A with King-Gage, Tank Mate, or Endress & Hauser Fittings)																																																																																																																						
10850	1,085.0 inches																																																																																																																						
00305	30.5 inches																																																																																																																						
00	Quick Disconnect Receptacle (QDR) w/No Cable																																																																																																																						
R0	QDR & 90° FWC w/No Cable																																																																																																																						
01	QDR & Field Wireable Connector (FWC) w/No Cable																																																																																																																						
05	QDR w/25 ft Standard Molded Cordset																																																																																																																						
10	QDR w/25 ft Standard Molded Cordset																																																																																																																						
20	QDR w/25 ft Standard Molded Cordset																																																																																																																						
99	1/2" NPTNo QDR, no FWC and no Cable (No sensor warranty for water damage)																																																																																																																						
0	Horizontal																																																																																																																						
1	Vertical																																																																																																																						
2	Other (specify angle from vertical or from horizontal)																																																																																																																						
71060A0003	Insulated Vessel - Standard Flange - 316L																																																																																																																						
71060A0004	Uninsulated Vessel - Standard Flange - 316L																																																																																																																						
71060A0005	Insulated Vessel - Pressure Vessel Flange - 316L																																																																																																																						
71060A0006	Uninsulated Vessel - Pressure Vessel Flange - 316L																																																																																																																						
71060A0009	Insulated Vessel - H/D Press. Vessel Flange - 316L																																																																																																																						
Tank Mate, uninsulated	57200A0002																																																																																																																						
Tank Mate, insulated	57200A0001																																																																																																																						
Anderson USP VI	44348A0003																																																																																																																						
Cherry Burrell	44292A0001																																																																																																																						
King Gage	36240S3212																																																																																																																						
Tank Mate	36240S3123																																																																																																																						
Continental	5658900000																																																																																																																						
Rosemount/Foxboro	36240E3341																																																																																																																						
Anderson fitting	73198A0001																																																																																																																						
Cherry Burrell fitting	73198A0002																																																																																																																						
King Gage Fitting	73198A0003																																																																																																																						
Tankmate	73198A0004																																																																																																																						
Molded w/25' cable	42117K0025																																																																																																																						
Molded w/50' cable	42117K0050																																																																																																																						
Molded w/100' cable	42117K0100																																																																																																																						
5-Conductor w/25' cable	42117H0025																																																																																																																						
5-Conductor w/50' cable	42117H0050																																																																																																																						
5-Conductor w/100' cable	42117H0100																																																																																																																						

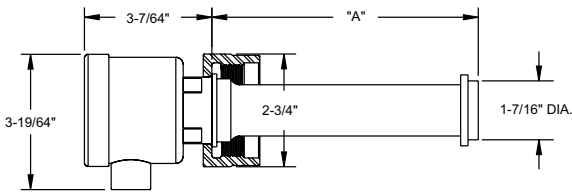
Sensor Fittings and Dimensions



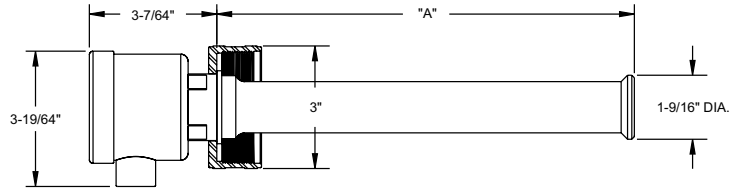
ANDERSON SHELL TYPE	"A"
NON INSULATED	2-3/16
INSULATED	6-1/2



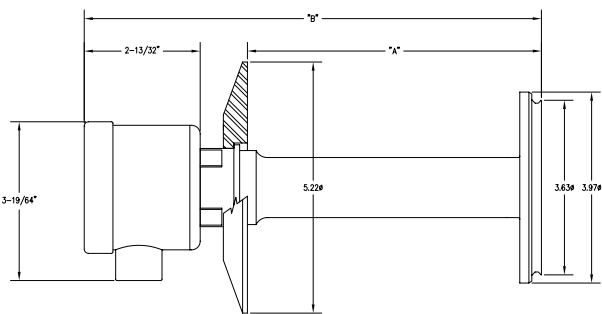
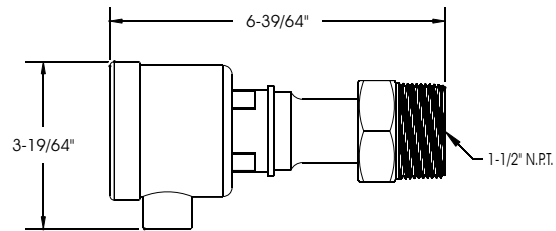
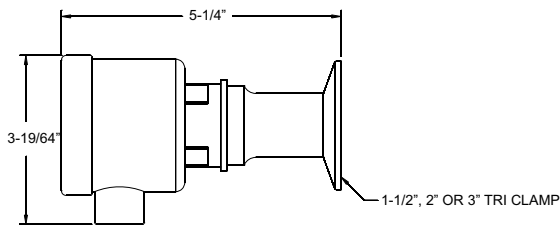
KING SHELL TYPE	"A"
NON INSULATED	2-3/16
STANDARD	6-9/16
LONG	8-13/16



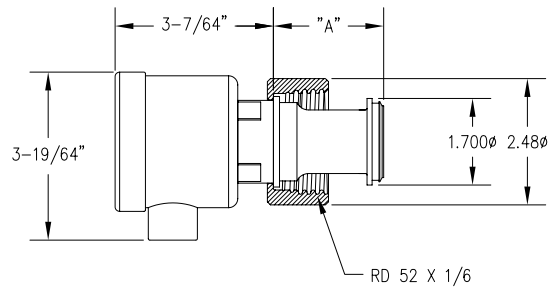
CHERRY BURRELL SHELL TYPE	"A"
NON INSULATED	2-3/16
INSULATED	6-1/2



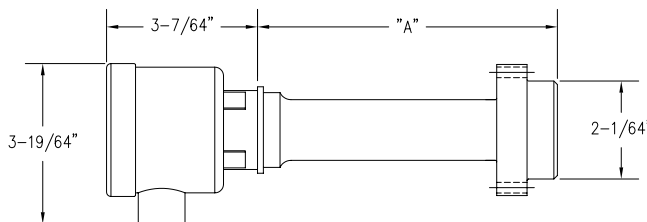
TANK MATE SHELL TYPE	"A"
SHORT	5-7/32
MEDIUM	7-19/64
LONG	10-3/16



FITTING	"A" DIM.	"B" DIM.
ROSEMOUNT SHORT	2.11"	5-1/2"
ROSEMOUNT LONG	6.11"	9-1/2"



DESCRIPTION - USE	"A" DIM.
E+H LONG (6" SHELL)	6.60
E+H SHORT (1-9/16" SHELL)	2.16



CONTINENTAL SHELL TYPE	"A"
NON INSULATED	2-5/32
INSULATED	6-3/16



Copyright© 2008 REGOM INSTRUMENTS s.r.o.

Bez souhlasu REGOM INSTRUMENTS s.r.o. není dovoleno texty či obrazové materiály modifikovat, kopírovat, distribuovat, přenášet, zobrazovat, reprodukovat, publikovat, nebo pomocí nich vytvářet pozměněné materiály.

www.regom.com